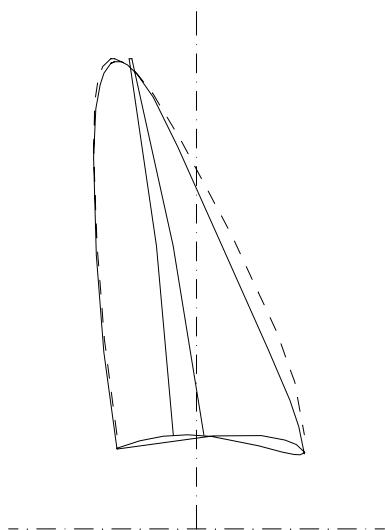
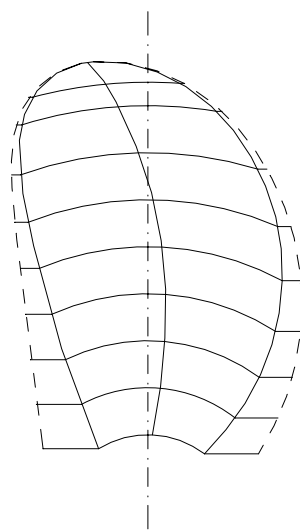


SVA CP 1193, adjusted to $P_{0.7}/D = 1.0$

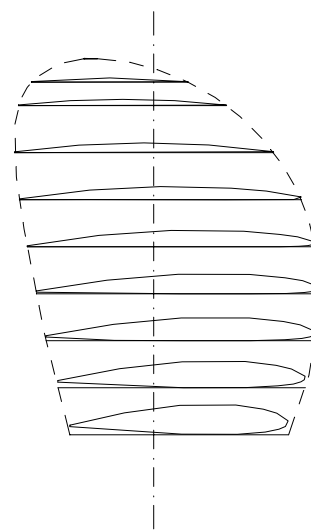
SIDE VIEW
CLEARANCE CURVE



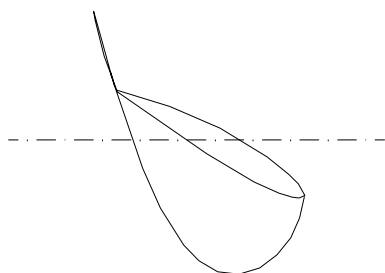
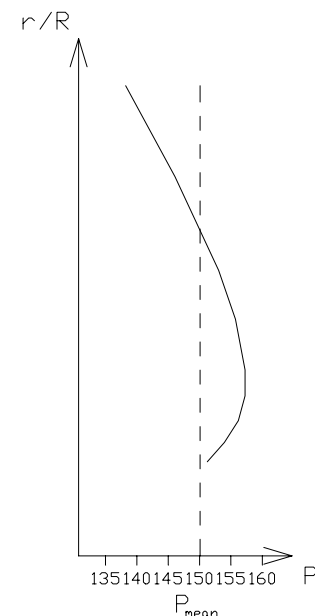
PROJECTED OUTLINE
DEVELOPED OUTLINE



BLADE SECTIONS
EXPANDED OUTLINE



PITCH DISTRIBUTION



r/R	r	t	c	c_LE	f	rake	P
0.20000	15.00	4.890	34.90	21.53	0.831	2.108	151.23
0.30000	22.50	4.335	39.52	24.23	0.993	3.162	156.58
0.40000	30.00	3.780	43.05	25.87	1.160	4.216	157.24
0.50000	37.50	3.225	45.19	26.48	1.287	5.270	155.80
0.60000	45.00	2.670	45.93	25.77	1.274	6.324	153.24
0.70000	52.50	2.115	45.02	23.59	1.058	7.378	150.00
0.80000	60.00	1.560	41.37	19.15	0.780	8.432	146.33
0.90000	67.50	1.005	33.22	11.66	0.502	9.487	142.36
0.95000	71.25	0.728	25.00	5.50	0.310	10.014	140.30
1.00000	75.00	0.450	2.10	-9.00	0.000	10.541	138.19

PROPELLER DIAMETER	D	150.0000mm
PITCH AT r/R=0.7	$P_{0.7}$	150.0000mm
PITCH AT r/R=0.75	$P_{0.75}$	148.2095mm
MEAN PITCH	P_{mean}	150.0722mm
CORDL. AT r/R=0.75	$c_{0.75}$	43.6081mm
THICKN. AT r/R=0.75	$t_{0.75}$	1.8375mm
PITCH RATIO	$P_{0.7}/D$	1.00000
MEAN PITCH RATIO	P_{mean}/D	1.00048
AREA RATIO	A_E/A_0	0.70000
SKEW		12.65898°
HUB DIAMETER RATIO	d_h/D	0.16667
NUMBER OF BLADES	z	5
DIRECTION OF ROTATION		RIGHT-HANDED